

TUPKNIT®



KRB-4TV

*Inter-Rib With Coarse Gauge
Circular Knitting Machine*



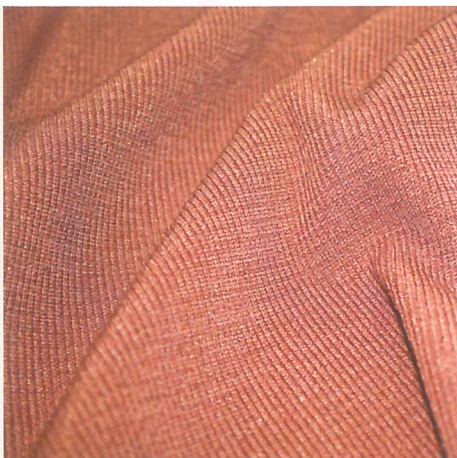
KEUMYONG
www.keumyong.com

KRB-4TV

These model's cam system has been manufactured with completely closed cam system in such way to allow high operational speed, with the best stitch formation and high quality Rib fabric which is utilized for the outer wear garments production and for underwear.

MODEL	DIAMETER	GAUGE(N.P.I)	FEEDS	SPEED(R.P.M)
KRB-4TV	30"	7-12G	36F	25-30
	34"	7-12G	40F	23-27
	36"	7-12G	42F	20-22

※ One race cam system for each dial and cylinder

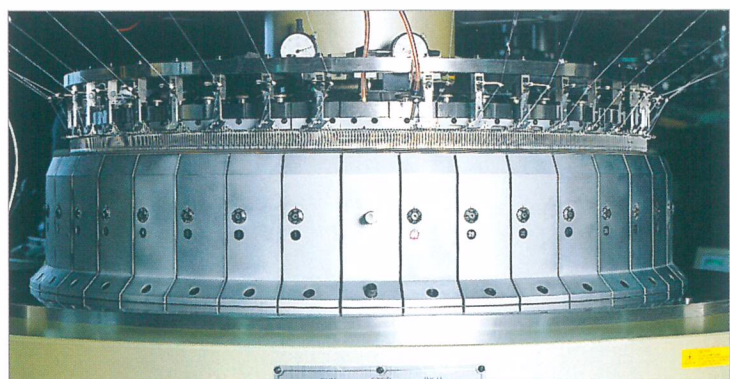


STANDARD SPECIFICATIONS

- * Cylinder diameter, needles per inch number of feeds are described as above, so please order the machine according to requirements
- * AC motor with inverter control unit.
- * Dial and cylinder needle detectors.
- * Positive yarn feeding device.
- * Tube-side creel with double tie.
- * Venti-Cleaner.
- * Oil mist lubricator for needles and cams with dust blower.
- * Spreader size ring system.
- * Speed of machine depending upon yarn used, knitting condition, gauge etc, the machine speed can be either increased or decreased.

So please select the optimum speed for the machine according to machine condition.

The speed figures on this table are given only as guide.

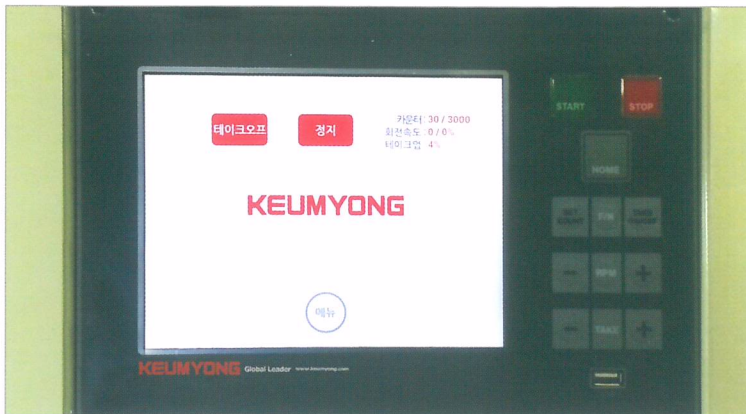


MODEL : KRB-4TV

OPTIONAL PARTS

- * Additional cams when increasing cam in the cylinder and dial for fabric potential.
- * Plating fabrics can be knitted provided yarn carrier.
- * Knitting Lycra yarns in plating construction by using Memminger MER system.

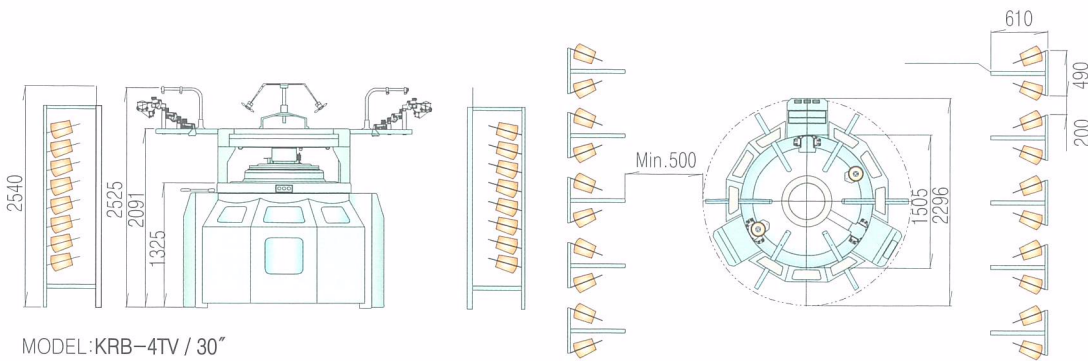
INTEGRATED CONTROLLER



- * Fully integrated driving control mode with character and graphic.
- * Self-diagnosis and alarm function.
- * Auto take-down tension and speed control system.
 Easy setting method and bar-graphic digital indicating for all functions.

PACKING DIMENSIONS

KRB - 4TV	30" DIAMETER		
Approx.Net weight	2.800Kg		
Approx.Gross weight	3.000Kg		
Case size(mm)	Length	Width	Height
	2390 × 2250 × 2300		



MODEL:KRB-4TV / 30"

KEUMYONG

- Head office & Mfg : 57, Paldal-ro 7-gil, Buk-gu, Daegu, Korea
Telephone : +82-53-351-3081~7
Fax : +82-53-352-8085
- Seoul Office : 275, Gwangnaru-ro, Seongdong-gu, Seoul, Korea
Telephone : +82-2-3409-4700 / 4231~3
Fax : +82-2-3409-4040
- <http://www.keumyong.com> • E-mail: kymc@keumyong.com